



Datenblatt - Fiche technique - Data sheet

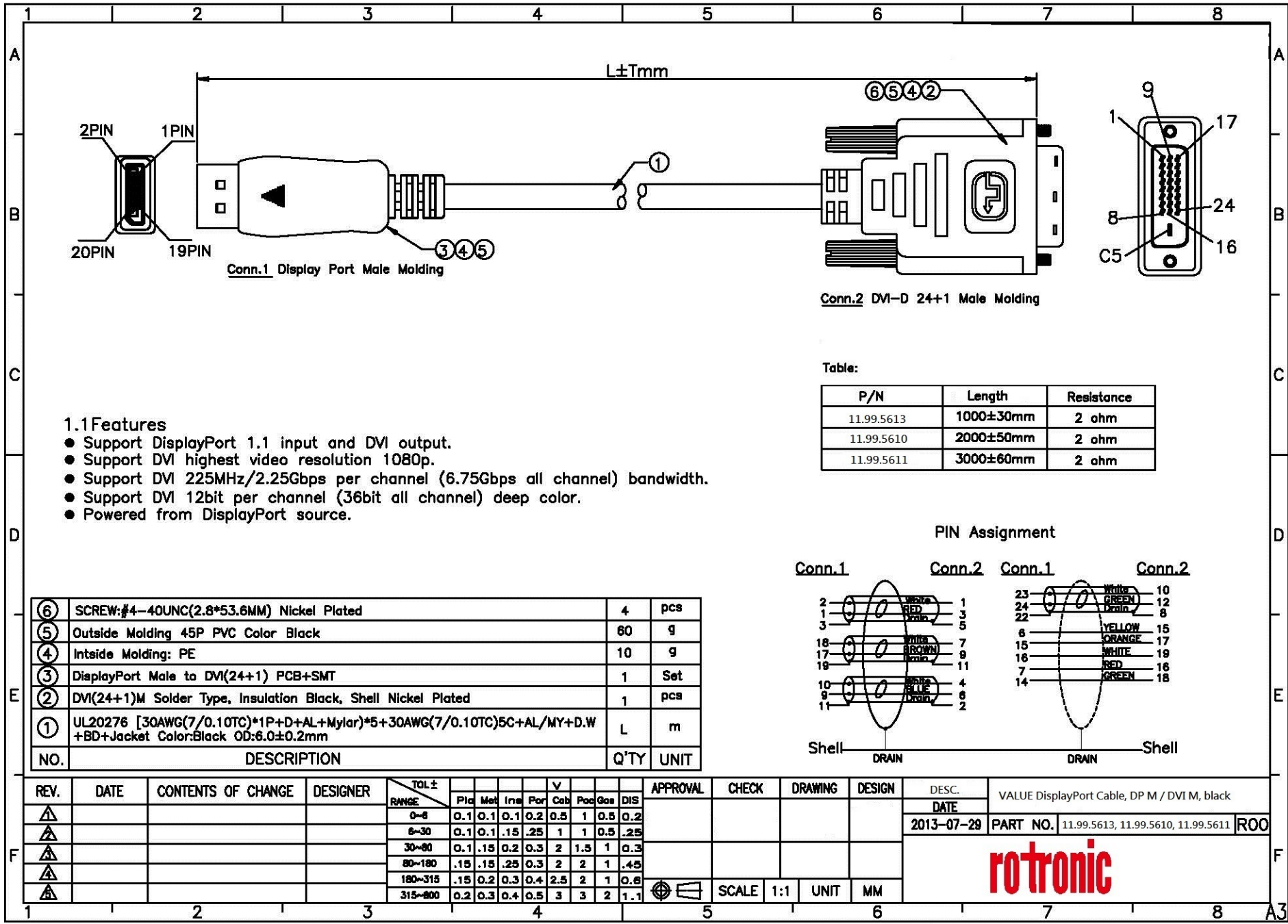
**11.99.5610**



VALUE DisplayPort Kabel DP ST - DVI (24+1) ST, 2,0m

VALUE Câble DisplayPort DP M - DVI(24+1) M, 2,0m

VALUE DisplayPort Cable, DP-DVI (24+1), M/M, 2 m



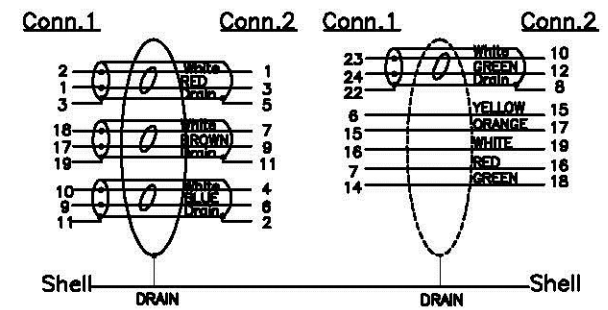
**1.1 Features**

- Support DisplayPort 1.1 input and DVI output.
- Support DVI highest video resolution 1080p.
- Support DVI 225MHz/2.25Gbps per channel (6.75Gbps all channel) bandwidth.
- Support DVI 12bit per channel (36bit all channel) deep color.
- Powered from DisplayPort source.

Table:

P/N	Length	Resistance
11.99.5613	1000±30mm	2 ohm
11.99.5610	2000±50mm	2 ohm
11.99.5611	3000±60mm	2 ohm

**PIN Assignment**



NO.	DESCRIPTION	Q'TY	UNIT
⑥	SCREW:#4-40UNC(2.8*53.6MM) Nickel Plated	4	pcs
⑤	Outside Molding 45P PVC Color Black	60	g
④	Intside Molding: PE	10	g
③	DisplayPort Male to DVI(24+1) PCB+SMT	1	Set
②	DVI(24+1)M Solder Type, Insulation Black, Shell Nickel Plated	1	pcs
①	UL20276 [30AWG(7/0.10TC)*1P+D+AL+Mylar]*5+30AWG(7/0.10TC)5C+AL/MY+D.W +BD+Jacket Color:Black OD:6.0±0.2mm	L	m

REV.	DATE	CONTENTS OF CHANGE	DESIGNER	TOL ±										APPROVAL	CHECK	DRAWING	DESIGN	DESC.	VALUE DisplayPort Cable, DP M / DVI M, black		
				RANGE	Plc	Met	Ina	Par	Col	Poc	Gas	DIS	DATE						PART NO.	11.99.5613, 11.99.5610, 11.99.5611	ROO
△				0~6	0.1	0.1	0.1	0.2	0.5	1	0.5	0.2						2013-07-29			
△				6~30	0.1	0.1	.15	.25	1	1	0.5	.25									
△				30~80	0.1	.15	0.2	0.3	2	1.5	1	0.3									
△				80~180	.15	.15	.25	0.3	2	2	1	.45									
△				180~315	.15	0.2	0.3	0.4	2.5	2	1	0.6									
△				315~∞00	0.2	0.3	0.4	0.5	3	3	2	1.1									



SCALE 1:1 UNIT MM